



**MIAMI-DADE COUNTY**  
**BUILDING CODE COMPLIANCE OFFICE (BCCO)**  
**PRODUCT CONTROL DIVISION**

**MIAMI-DADE COUNTY, FLORIDA**  
**METRO-DADE FLAGLER BUILDING**

**140 WEST FLAGLER STREET, SUITE 1603**  
**MIAMI, FLORIDA 33130-1563**  
**(305) 375-2901 FAX (305) 375-2908**

**NOTICE OF ACCEPTANCE (NOA)**

[www.miamidade.gov](http://www.miamidade.gov)

**Transparent Protection Systems, Inc.**  
**6643 42<sup>nd</sup> Terrace North**  
**West Palm Beach, FL 33407**

**SCOPE:**

This NOA is being issued under the applicable rules and regulations governing the use of construction materials. The documentation submitted has been reviewed by Miami-Dade County Product Control Division and accepted by the Board of Rules and Appeals (BORA) to be used in Miami Dade County and other areas where allowed by the Authority Having Jurisdiction (AHJ).

This NOA shall not be valid after the expiration date stated below. The Miami-Dade County Product Control Division (In Miami Dade County) and/or the AHJ (in areas other than Miami Dade County) reserve the right to have this product or material tested for quality assurance purposes. If this product or material fails to perform in the accepted manner, the manufacturer will incur the expense of such testing and the AHJ may immediately revoke, modify, or suspend the use of such product or material within their jurisdiction. BORA reserves the right to revoke this acceptance, if it is determined by Miami-Dade County Product Control Division that this product or material fails to meet the requirements of the applicable building code.

This product is approved as described herein, and has been designed to comply with the High Velocity Hurricane Zone of the Florida Building Code.

**DESCRIPTION: Clear Polycarbonate Storm Panels Shutter**

**APPROVAL DOCUMENT:** Drawing No. 09-123, titled " Clear Polycarbonate Storm Panel ", sheets 1 through 4 of 4, prepared by Knezevich Associates Consulting Engineers, dated April 14, 2009, signed and sealed by V. J. Knezevich, P.E., bearing the Miami-Dade County Product Control Revision stamp with the Notice of Acceptance number and the expiration date by the Miami-Dade County Product Control Division.

**MISSILE IMPACT RATING: Large and Small Missile Impact**

**LABELING:** Each panel shall bear a permanent label with the manufacturer's name or logo, city, state and the following statement: "Miami-Dade County Product Control Approved", unless otherwise noted herein.

**RENEWAL** of this NOA shall be considered after a renewal application has been filed and there has been no change in the applicable building code negatively affecting the performance of this product.

**TERMINATION** of this NOA will occur after the expiration date or if there has been a revision or change in the materials, use, and/or manufacture of the product or process. Misuse of this NOA as an endorsement of any product, for sales, advertising or any other purposes shall automatically terminate this NOA. Failure to comply with any section of this NOA shall be cause for termination and removal of NOA.

**ADVERTISEMENT:** The NOA number preceded by the words Miami-Dade County, Florida, and followed by the expiration date may be displayed in advertising literature. If any portion of the NOA is displayed, then it shall be done in its entirety.

**INSPECTION:** A copy of this entire NOA shall be provided to the user by the manufacturer or its distributors and shall be available for inspection at the job site at the request of the Building Official.

This NOA **revises & renews** NOA # **04-0413.03** and consists of this page 1, evidence submitted pages E-1 & E-2 as well as approval document mentioned above.

The submitted documentation was reviewed by **Helmy A. Makar, P.E., M.S.**



*Helmy A. Makar*  
 08/26/2009

**NOA No. 09-0423.04**  
**Expiration Date: 07/19/2014**  
**Approval Date: 08/26/2009**

**Transparent Protection Systems, Inc.**

**NOTICE OF ACCEPTANCE: EVIDENCE SUBMITTED**

**1. EVIDENCE SUBMITTED UNDER PREVIOUS APPROVAL # 00-0524.14**

**A. DRAWINGS**

1. *Drawing No. 00-246, titled " Clear Polycarbonate Storm Panel ", prepared by Knezevich & Associates, Inc., dated December 14, 2000, last revision #1 dated June 7, 2001, sheets 1 through 3 of 3, signed and sealed by V. J. Knezevich, P.E.*

**B. TESTS**

1. *Test report on Large Missile Impact Test, Cyclic Wind Pressure Test and Uniform Static Air Pressure Test of Clear Polycarbonate Storm Panels, prepared by Construction Testing Corporation, Report No. 00-045 dated October 31, 2000, signed and sealed by Yamil G. Kuri, P.E.*
2. *Report on panel thickness of Clear Polycarbonate Storm Panel, prepared by Construction Testing Corporation, dated April 9, 2001, signed by George Dotzler.*
3. *Test report on Self Ignition Temperature, Rate of Burn, and Smoke Density Tests of Clear Polycarbonate Storm Panels, prepared by ETC Laboratories, Inc., Report No. ETC-01-753-10724.0 dated June 13, 2001, signed and sealed by Joseph L. Doldan, P.E.*
4. *Draft Test Report on 900 hours of the 4500 hours exposure of the Accelerated weathering of Clear Polycarbonate Storm Panels, prepared by PRI Asphalt Technologies, Notification No. PRI01041, dated June 13, 2001, by Don Portfolio.*

**C. CALCULATIONS**

1. *Anchor analysis and shutter calculation, dated December 14, 2000, Pages 1 through 38, prepared by Knezevich and Associates Inc., signed and sealed by V.J. Knezevich, P.E.*

**D. MATERIAL CERTIFICATION**

1. *Letter from GE Plastics, signed by Mr. Doug Hamilton, dated April 30, 2001, with comparable data between Lexan Sheet 9034 and Lexan resin 103.*

**2. EVIDENCE SUBMITTED UNDER PREVIOUS**

**A. DRAWINGS**

1. *Drawing No. 04-342, titled " Clear Polycarbonate Storm Panel ", sheets 1 through 3 of 3, prepared by Knezevich & Associates, Inc., dated June 30, 2004, last revision #1 dated July 26, 2004, signed and sealed by V. J. Knezevich, P.E.*

**B. TESTS**

1. *None.*



Helmy A. Makar, P. E.  
Product Control Examiner  
NOA No 04-0413.03  
Expiration Date: 07/19/2009  
Approval Date: 09/02/2004

**Transparent Protection Systems, Inc.**

**NOTICE OF ACCEPTANCE: EVIDENCE SUBMITTED**

**C. CALCULATIONS**

1. *Anchor calculations dated June 30, 2004, 20 pages, prepared by Knezevich & Associates, Inc., signed and sealed by V. J. Knezevich, P.E.*

**D. QUALITY ASSURANCE**

1. *By Miami-Dade County Building Code Compliance Office.*

**E. MATERIAL CERTIFICATIONS**

1. *None.*

**3. NEW EVIDENCE SUBMITTED**

**A. DRAWINGS**

1. *Drawing No. 09-123, titled " Clear Polycarbonate Storm Panel ", sheets 1 through 4 of 4, prepared by Knezevich Associates Consulting Engineers, dated April 14, 2009, signed and sealed by V. J. Knezevich, P.E.*

**B. TESTS**

1. *Test report on Large Missile Impact Test, Cyclic Wind Pressure Test and Uniform Static Air Pressure Test of Clear Polycarbonate Storm Panels, prepared by Hurricane Test Laboratory, LLC, Report # 0239-0312-06 dated January 02, 2007, signed and sealed by Vinu J. Abraham, P.E.*
2. *Test report on Self Ignition Temperature, Rate of Burn, and Smoke Density and Mechanical Property Tests of BAYER Makrolon 3103 – UV stabilized Polycarbonate/ETC06026, prepared by ETC Laboratories, Inc., Report No. ETC-06-753-18071.0 dated June 22, 2007, signed and sealed by Joseph L. Doldan, P.E.*
3. *Letter from Engineering Express, dated August 02, 2006, signed and sealed by Frank L. Bennardo, P.E., regarding Alternative Polycarbonate Material for ClearGuard Storm Panels: CALIBRE 302V-6 Polycarbonate (Manufactured by Dow Chemical Co.).*

**C. CALCULATIONS**

1. *Anchor calculations dated April 17, 2009, 41 pages, prepared by Knezevich Associates Consulting Engineers, signed and sealed by V. J. Knezevich, P.E.*

**D. QUALITY ASSURANCE**

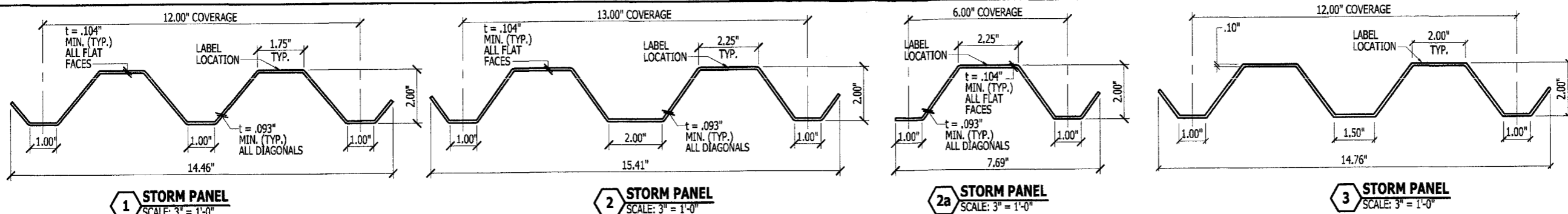
1. *By Miami-Dade County Building Code Compliance Office.*

**E. MATERIAL CERTIFICATIONS**

1. *Technical Data Sheet for CALIBRE 302V-6 Polycarbonate Resin by Dow, 3 pages.*



Helmy A. Makar, P. E.  
Product Control Examiner  
NOA No 04-0413.03  
Expiration Date: 07/19/2009  
Approval Date: 09/02/2004



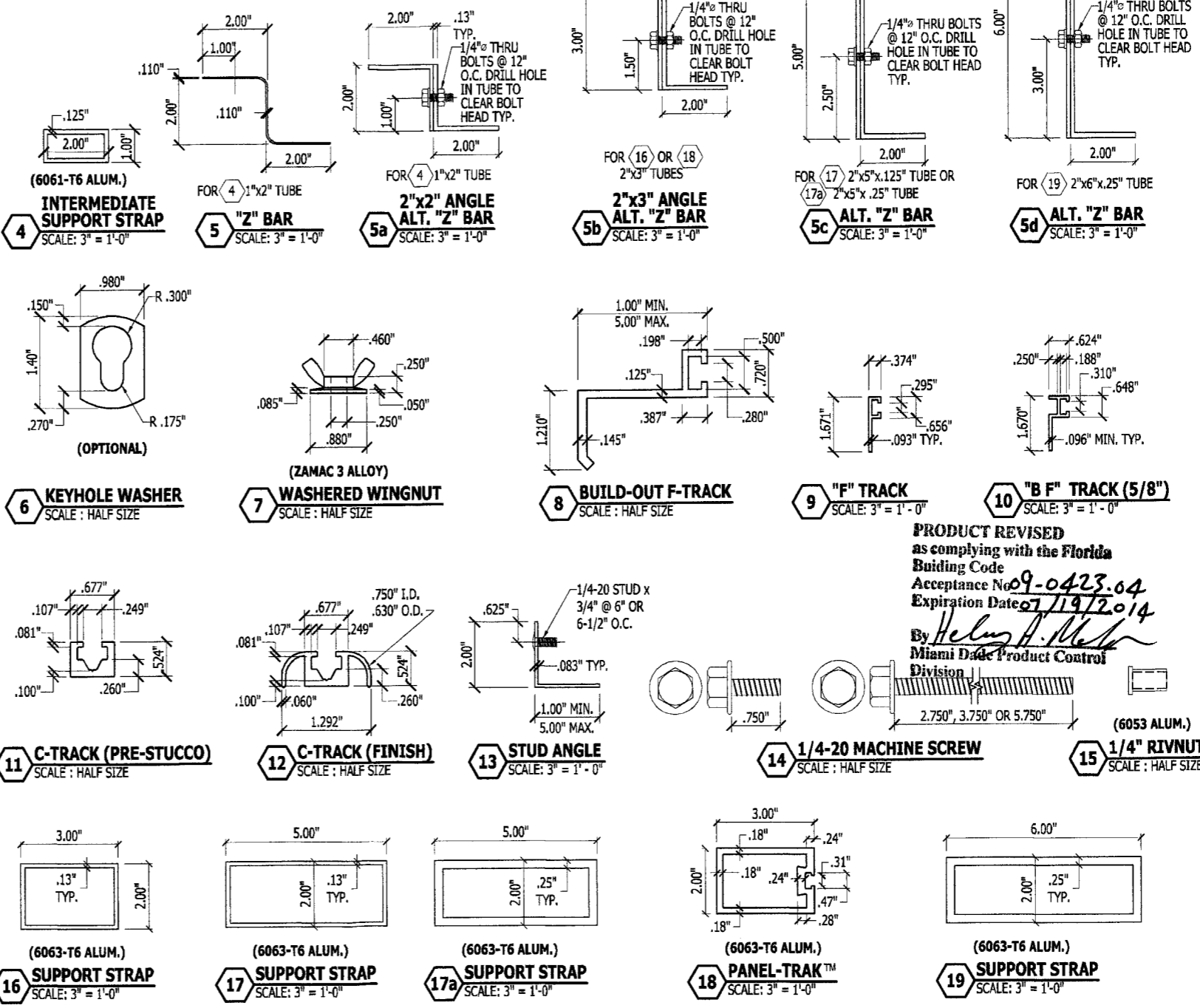
**GENERAL NOTES:**

- THESE APPROVAL DOCUMENTS REPRESENT A SHUTTER SYSTEM ANALYZED WITH THE PROVISION SET FOR THE ISSUANCE OF A NOTICE OF ACCEPTANCE (NOA) BY MIAMI-DADE COUNTY PRODUCT CONTROL DIVISION FOR THE FLORIDA BUILDING CODE (FBC), THE HIGH VELOCITY HURRICANE ZONE (HVHZ).
- AN ALLOWABLE STRESS INCREASE HAS NOT BEEN USED IN THE DESIGN OF THIS PRODUCT, EXCEPT FOR WOOD ANCHOR ANALYSIS WHEREIN A LOAD DURATION FACTOR (CD = 1.6) HAS BEEN USED PER THE PROVISIONS OF CHAPTER 16 OF THE FLORIDA BUILDING CODE (FBC) AND THE NATIONAL DESIGN STANDARD (NDS) FOR WIND LOADS AND LOAD COMBINATIONS WITH WIND.
- DETERMINE THE POSITIVE AND NEGATIVE DESIGN LOADS TO USE WHEN REFERENCING THESE DOCUMENTS IN ACCORDANCE WITH THE GOVERNING CODE AND GOVERNING WIND VELOCITY.
- THESE APPROVAL DOCUMENTS ARE GENERIC AND DO NOT INCLUDE INFORMATION FOR SITE-SPECIFIC APPLICATION OF THIS SHUTTER SYSTEM.
- USE OF THESE APPROVAL DOCUMENTS SHALL COMPLY WITH CHAPTER 61G15-23 OF THE FLORIDA ADMINISTRATIVE CODE.
- THESE APPROVAL DOCUMENTS, ARE SUITABLE TO BE APPLIED BY THE CONTRACTOR PROVIDED THE CONTRACTOR DOES NOT DEVIATE FROM THE CONDITIONS DETAILED HEREIN AND THE CONTRACTOR VERIFIES THAT THE EXISTING STRUCTURE DOES NOT DEVIATE IN EITHER FORM OR MATERIAL FROM THE STRUCTURAL SUBSTRATES DETAILED HEREIN.
- ANY MODIFICATIONS OR ADDITIONS TO THESE APPROVAL DOCUMENTS WILL VOID THE APPROVAL DOCUMENTS.
- WHEN THE SITE CONDITIONS DEVIATE FROM THESE APPROVAL DOCUMENTS, THE BUILDING OFFICIAL MAY ELECT ONE OF THE FOLLOWING OPTIONS:
  - REQUIRE THAT SITE SPECIFIC DOCUMENTS BE PREPARED, SIGNED, DATED AND SEALED BY A LICENSED ENGINEER OR REGISTERED ARCHITECT, WHICH DETAIL AND JUSTIFY THE DEVIATION. SAID DOCUMENTS SHALL BE SUBMITTED TO THE PRODUCT ENGINEER FOR REVIEW AS A CONDITION TO THE BUILDING OFFICIAL GRANTING HIS/HER APPROVAL.
  - REQUIRE THAT A ONE-TIME SITE SPECIFIC APPROVAL BE APPLIED FOR AND SECURED FROM THE MIAMI-DADE COUNTY PRODUCT CONTROL DIVISION.
- WHEN THE SITE CONDITION DEVIATIONS OCCUR WITHIN THE HIGH VELOCITY HURRICANE ZONE AREAS ONLY, OPTION "B" SHALL BE ACCEPTED BY THE BUILDING OFFICIAL.
- PRODUCT MARKINGS SHALL BE WITHIN 12" OF ONE END OF THE PANEL WITH A MINIMUM OF ONE MARKING PER PANEL AND SHALL BE PERMANENTLY LABELED AS FOLLOWS:
 

**TRANSPARENT PROTECTION SYSTEMS, INC.**  
**WEST PALM BEACH, FLORIDA**  
**TAS 201, 202 & 203**  
**9 LB. LARGE MISSILE**  
**MIAMI-DADE COUNTY PRODUCT CONTROL APPROVED**  
**REFER TO PRODUCT APPROVAL**  
**DRAWINGS FOR APPROVED APPLICATIONS & LIMITATIONS.**
- ALL BOLTS, SCREWS AND WASHERS SHALL BE 2024-T4 ALUMINUM ALLOY OR GALVANIZED OR STAINLESS STEEL WITH A MINIMUM TENSILE STRENGTH OF 60 KSI.
- STORM PANELS SHALL BE EXTRUDED IN CLEAR POLYCARBONATE WITH A MINIMUM THICKNESS AS INDICATED ON COMPONENTS (1), (2), (2a) & (3). ALL EXTRUSIONS SHALL BE 6063-T6 ALUMINUM ALLOY, U.O.N.
- MATERIAL SPECIFICATIONS: ALL POLYCARBONATE PANELS SHALL BE FABRICATED FROM 100% GE SYNTHETIC THERMOPLASTIC POLYMER LEXAN RESIN NUMBER 103-112 WHICH IS COMPARATIVE TO GE LEXAN POLYCARBONATE SHEET NUMBER 9034 AS APPROVED UNDER MIAMI-DADE COUNTY NOTICE OF ACCEPTANCE NUMBER 03-0924.06. SYNTHETIC THERMOPLASTIC POLYMER TENSILE STRENGTH  $F_y = 8,908$  P.S.I., FLEXURAL STRENGTH  $F_{by} = 12,900$  P.S.I., FLEXURAL MODULUS = 328,700 P.S.I.. TWO APPROXIMATE EQUIVALENTS ARE THE BAYER MAKROLON 3103 (UV STABILIZED) POLYCARBONATE RESIN AND DOW CALIBRE 302 V6 (UV STABILIZED) POLYCARBONATE RESIN.
- THE DETAILS AND SPECIFICATIONS SHOWN HEREIN REPRESENT THE PRODUCTS TESTED FOR IMPACT, CYCLIC AND UNIFORM STATIC AIR PRESSURE TESTING IN CONFORMANCE WITH FLORIDA BUILDING CODE TAS 201, 202, AND 203.
 

**MAX. POSITIVE DESIGN LOAD = + 72.0 P.S.F.**  
**MAX. NEGATIVE DESIGN LOAD = - 72.0 P.S.F.**
- THE PERMIT HOLDER SHALL VERIFY THE ADEQUACY OF THE EXISTING STRUCTURE TO SUSTAIN THE NEW SUPERIMPOSED LOADS AND TO VERIFY ALL DIMENSIONS AT THE JOB SITE BEFORE COMMENCING WITH THE WORK.
- TOP & BOTTOM DETAILS SHOWN MAY BE INTERCHANGED AS FIELD CONDITIONS DICTATE. PANELS MAY BE MOUNTED HORIZONTALLY WHERE APPLICABLE.
- HOMEOWNER/END USER MUST HAVE Z BARS, STRAPS AND BOLTS IN PLACE AS THEY ARE AN INTEGRAL PART OF THE APPROVED STORM PANEL SYSTEM.
 

**WARNING: THIS STORM PANEL SYSTEM WILL NOT OFFER HURRICANE PROTECTION UNLESS ALL Z BARS, REINFORCING STRAPS AND BOLTS ARE PROPERLY INSTALLED.**
- THE PANEL-TRACK™ SYSTEM AND PATENT PENDING PRODUCTS ARE REGISTERED AND OWNED BY WEATHERGUARD BUILDING PRODUCTS, INC., WEST PALM BEACH, FL.



**PRODUCT REVISED**  
 as complying with the Florida  
 Building Code  
 Acceptance No. **09-0423.04**  
 Expiration Date **07/19/2014**  
 By *Helmut A. Meier*  
 Miami Dade Product Control  
 Division

**KNEZEVICH ASSOCIATES**  
 Consulting Engineers  
 2590 S.W. 105th Terrace \* Davie, Florida 33324  
 T (954) 821-6933 \* F (954) 452-7960 \* COA 27989  
 email: VJK@Knezevich.com

---

**CLEAR POLYCARBONATE STORM PANEL**

**Transparent Protection Systems, Inc.**  
 6643 N. 42nd Terrace  
 West Palm Beach, FL 33407  
 (888) 447-8320

**GUARD HURRICANE PANELS**

---

no	description	date

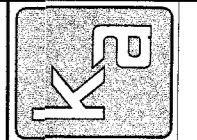
---

**V.J. Knezevich**  
 Professional Engineer  
 FL License No.: PE 0010983

*[Signature]*

**APR 14 2009**

drawn by ARV scale AS NOTED  
 date 04/14/2009  
 drawing no. **09-123**  
 sheet 1 of 4



**KNEZEVICH ASSOCIATES**  
 Consulting Engineers  
 2590 S.W. 105th Terrace \* Davie, Florida 33324  
 T (954) 821-6933 \* F (954) 452-7960 \* COA 27989  
 email: VJK@knezevich.com

**CLEAR POLYCARBONATE STORM PANEL**  
**Transparent Protection Systems, Inc.**  
 6643 N. 42nd Terrace  
 West Palm Beach, FL 33407  
 (888) 447-6320

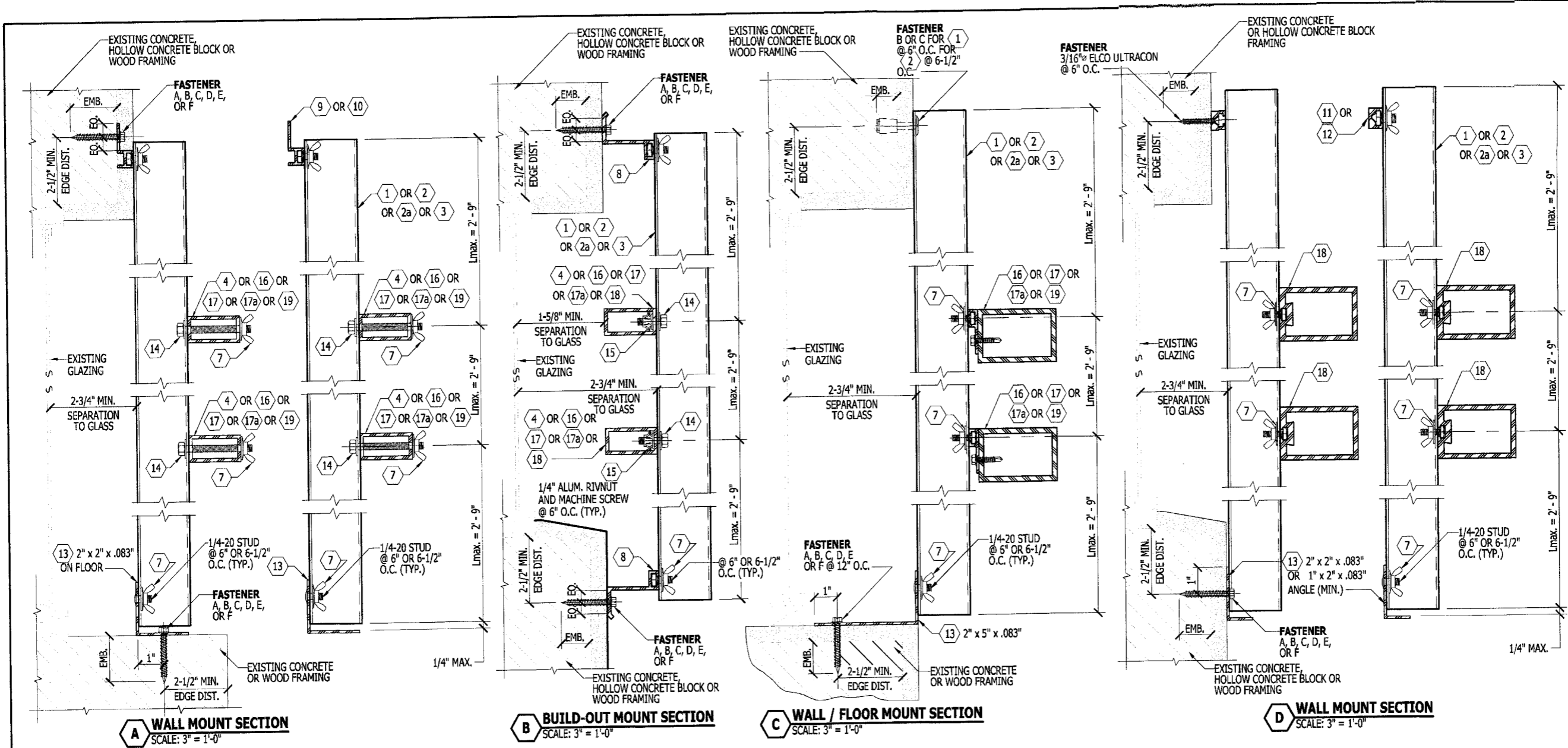
no	date	description

**V.J. Knezevich**  
 Professional Engineer  
 FL License No. PE 001983

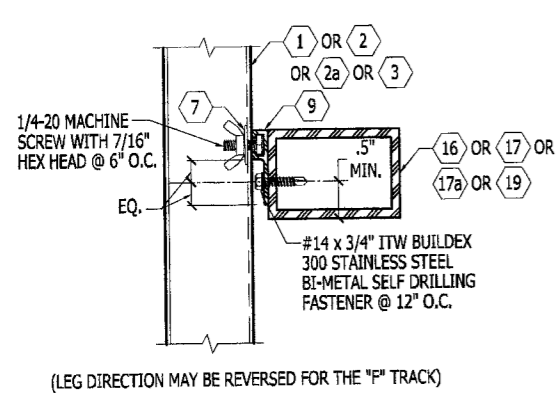
**PRODUCT REVISED**  
 as complying with the Florida  
 Building Code  
 Acceptance No 09-0423-04  
 Expiration Date 07/19/2019  
 APR 14 2009

By *Helmut A. Weber*  
 Miami Dade Product Control  
 Division

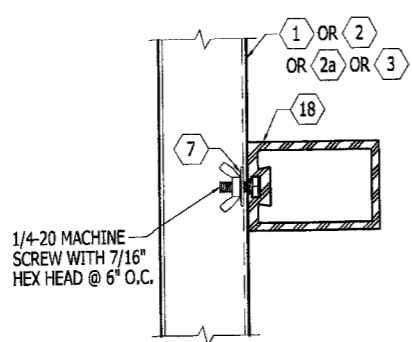
drawing no. **09-123**  
 sheet 2 of 4



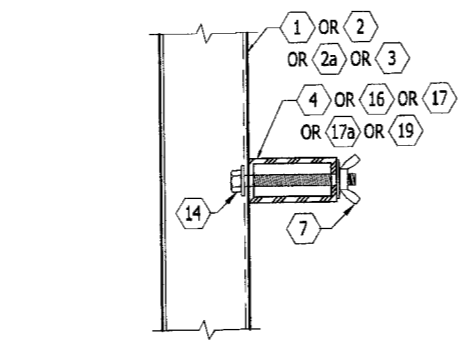
**\*NOTE:**  
 ANY WALL/WALL OR WALL/FLOOR MOUNTING CONDITION MAY USE ANY OF THE INTERMEDIATE SUPPORT STRAP SYSTEMS SHOWN IN DETAILS A, B, C OR D.



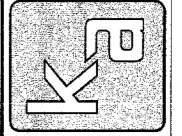
**E1 SUPPORT STRAP / "F" TRACK ASSEMBLY**  
 SCALE: 3" = 1'-0"



**E2 ALTERNATE SUPPORT STRAP**  
 SCALE: 3" = 1'-0"



**E3 ALTERNATE SUPPORT STRAP**  
 SCALE: 3" = 1'-0"

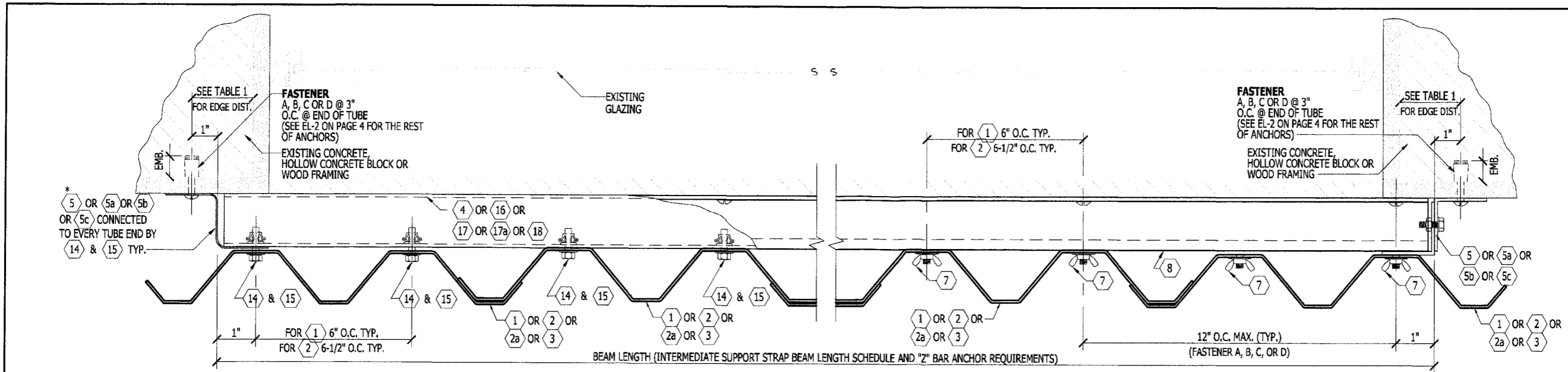


**KNEZEVICH ASSOCIATES**  
 Consulting Engineers  
 2590 S.W. 105th Terrace \* Davie, Florida 33324  
 T (954) 821-0933 \* F (954) 452-7960 \* COA 27989  
 email: VJK@Knezevich.com  
 Copyright © 2009 VJKnezevich & Associates, LLC d/b/a Knezevich Associates

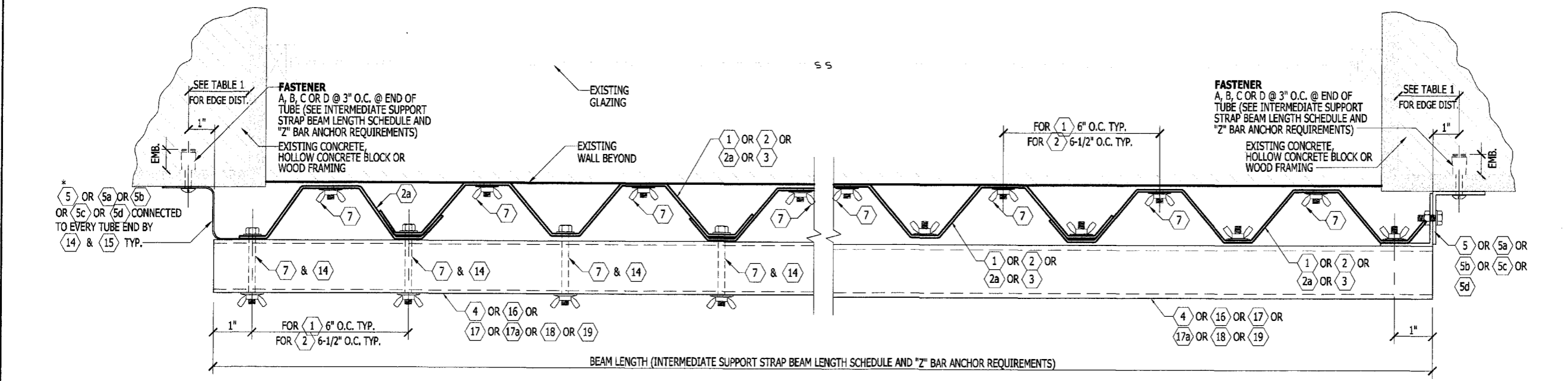
**CLEAR POLYCARBONATE STORM PANEL**  
**Transparent Protection Systems, Inc.**  
 6645 N. 42nd Terrace  
 West Palm Beach, FL 33407  
 (888) 447-8320  
**CLEAR GUARD HURRICANE PANELS**

no.	description

**V.J. Knezevich**  
 Professional Engineer  
 FL License No. 7E 0010983  
  
**KPR 1A 2009**  
 drawing no. ARV scale AS NOTED  
 date 04/14/2009  
 drawing no. **09-123**  
 sheet 3 of 4



**E PLAN VIEW FOR SECTION B**  
 SCALE: 3" = 1'-0"



**F PLAN VIEW FOR SECTIONS A, C & D**  
 SCALE: 3" = 1'-0"

**\* NOTE:**  
 ALL INSTALLATIONS MUST PROVIDE FULL PANELS OR HALF PANELS AT OPENINGS TO ENSURE THAT ASSEMBLY CLOSURE ( 5 ) HAS POSITIVE CONNECTIONS AS SHOWN IN ABOVE PLAN VIEW DETAILS ( E ) & ( F ).

**PRODUCT REVISED**  
 as complying with the Florida Building Code  
 Acceptance No. **09-0413.04**  
 Expiration Date **07/19/2014**  
 By *Heung A. Nho*  
 Miami Dade Product Control Division

TABLE 1

HEADER, SILL AND PANEL ANCHOR SCHEDULE

FASTENER TYPE	DESCRIPTION	HOLLOW CONCRETE BLOCK MIN. EMBED.	EDGE DISTANCE	CONCRETE MIN. EMBEDMENT	EDGE DISTANCE	WOOD MIN. EMBEDMENT	EDGE DISTANCE	WALL SPACING (IN)		
								CONCRETE	HOLLOW CONCRETE BLOCK	WOOD
	1/4" ELCO CRETE FLEX SS4 WITH 2" MIN. EMBEDMENT	1-1/4"	2-1/2"	1-1/4" (MIN. 3.3 KSI CONC.)	2-1/2"	N/A	N/A	12"	12"	N/A
	1/4" ALL POINTS SOLID-SET ANCHOR WITH 7/8" EMBEDMENT & 1/4-20 STAINLESS STEEL MACHINE SCREW	7/8"	3"	7/8" (MIN. 3.0 KSI CONC.)	3"	N/A	N/A	12"	12"	N/A
	1/4" ELCO MALE/FEMALE "PANELMATE" & 1/4-20 MACHINE SCREW WITH NUT	1-1/4"	2"	1-3/4" (MIN. 3.3 KSI CONC.)	2-1/2"	1-7/8"	3/4"	12"	12"	12"
	1/4" x 2-1/2" MIN. WOOD LAG SHEAR PARALLEL OR PERP. TO WOOD GRAIN G=0.55, U.O.N.	N/A	N/A	N/A	N/A	1-7/8"	3/4"	12"	N/A	12"
	1/4" ELCO ULTRACON	1-1/4"	2-1/2"	1-3/4" (MIN. 3.3 KSI CONC.)	2-1/2"	N/A	N/A	12"	11"	N/A
	3/16" ELCO ULTRACON	1-1/4"	2-1/2"	1-3/4" (MIN. 3.3 KSI CONC.)	2-1/2"	N/A	N/A	12"	6"	N/A

TABLE 2

INTERMEDIATE SUPPORT STRAP BEAM LENGTH SCHEDULE AND "Z" BAR ANCHOR REQUIREMENTS

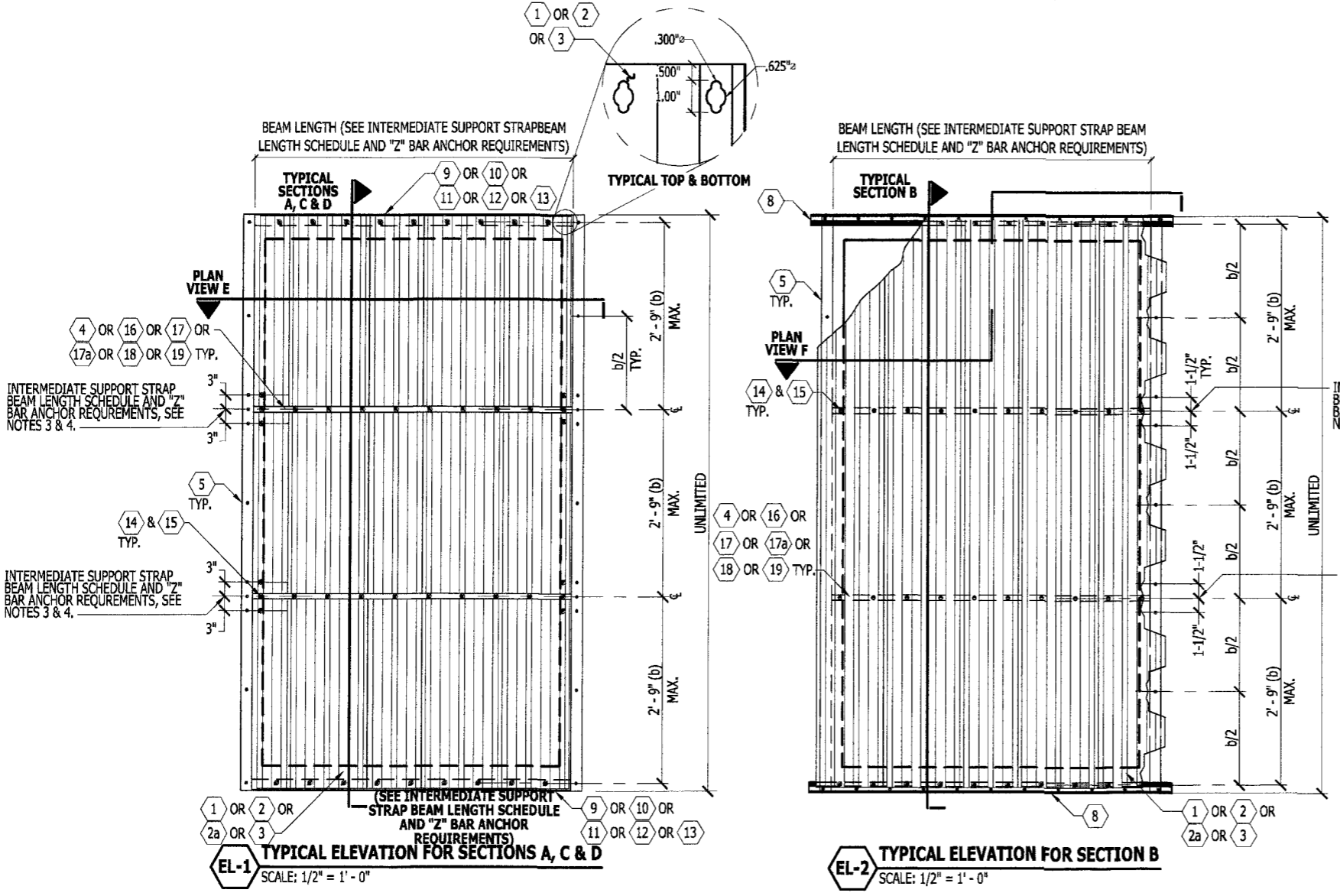
ALUMINUM TUBE COMPONENT NO.	DETAILS B, EL-1 & F LENGTH (IN.)	REACTION EACH END (LBS.)	DETAILS A, C, D, EL-2 & F LENGTH (IN.)	REACTION EACH END (LBS.)	"Z" BAR COMPONENT NO.	"Z" BAR MINIMUM THICKNESS (IN.)	ANCHOR QUANTITY		ANCHOR SPACING (IN.)
							A, B, C	D	
4	62.8"	647.0	62.8"	647.0	5 OR 5a	0.110" / 0.125"	3	1	3"
16	70"	722.0	69"	712.0	5b	0.125"	3	2	3"
17	97"	1000.0	94"	969.0	5c	0.125"	4	2	3"
17a	112"	1155.0	110"	1134.0	5c	0.156"	5	2	3"
18	79"	815.0	77"	794.0	5b	0.125"	4	2	3"
19	127"	1310.0	124"	1279.0	5d	0.156"	6	4	3"

ANCHOR NOTES:

- ANCHORS SHALL BE INSTALLED IN ACCORDANCE WITH MANUFACTURERS' RECOMMENDATIONS.
- MINIMUM EMBEDMENT AND EDGE DISTANCE EXCLUDES WALL FINISH OR STUCCO. EMBEDMENT OF FASTENER SHALL ONLY INCLUDE THE THREADED PORTION. EDGE DISTANCE SHALL BE AS NOTED ON DRAWING OR SPECIFIED IN THIS NOTES.
- WHERE EXISTING STRUCTURE IS WOOD FRAMING, WOOD FRAMING CONDITIONS VARY. FIELD VERIFY THAT FASTENERS ARE INTO ADEQUATE WOOD FRAMING MEMBERS, NOT PLYWOOD.
- WHERE ELCO PANELMATES OR LAG SCREWS FASTEN TO NARROW FACE OF STUD FRAMING, FASTENER SHALL BE LOCATED IN CENTER OF NOMINAL 2" x 4" (MIN.) WOOD STUD. 3/4" EDGE DISTANCE IS ACCEPTABLE FOR WOOD FRAMING. WOOD STUD SHALL BE "SOUTHERN PINE" G=0.55 OR GREATER DENSITY.
- MACHINE SCREWS SHALL HAVE MIN. OF 1/2" ENGAGEMENT OF THREADS IN BASE ANCHOR AND SHALL HAVE A WAFER HEAD (SIDEWALK BOLT), U.O.N.
- \* DESIGNATES ANCHORS WHICH ARE REMOVABLE BY REMOVING MACHINE SCREW, NUT OR WASHERED WINGNUT.
- ALL CLEAR POLYCARBONATE PANELS TO BE MOUNTED TO, EXTRUSIONS @ 6" OR 6-1/2" O.C.

INTERMEDIATE SUPPORT STRAP BEAM LENGTH SCHEDULE AND "Z" BAR ANCHOR REQUIREMENTS NOTES:

- (1) ANCHOR IS REQUIRED AT MIDPOINT BETWEEN "Z" BARS.
- ANY OF THE (4) ANCHORS (A, B, C OR D) SHOWN ON PAGE 4, MAY BE USED IN CONCRETE OR HALLOW CONCRETE BLOCK WALLS. THE SOLID SET ANCHOR MAY NOT BE USED IN SLABS OR CEILING, EXCEPT FOR SLABS ON GRADE (SUPPORTED BY COMPACTED FILL).
- ODD NUMBER OF ANCHORS SHOWN IN SCHEDULE MUST BE PLACED IN CENTER OF Z BAR FLANGE, AT CENTERLINE OF INTERMEDIATE SUPPORT STRAP AND OTHERS AT 3" ON CENTER, EQUALLY ON BOTH SIDES OF STRAP CENTERLINE, IN Z BAR.
- EVEN NUMBER OF ANCHORS SHOWN IN SCHEDULE MUST BE PLACED IN CENTER OF Z BAR FLANGE, STARTING AT 1-1/2" ON EITHER SIDE OF CENTERLINE OF INTERMEDIATE SUPPORT STRAP AND OTHERS AT 3" ON CENTER, EQUALLY ON BOTH SIDES OF THE STRAP CENTERLINE, IN THE Z BAR.



**Knezevich Associates**  
 Consulting Engineers  
 2590 S.W. 105th Terrace \* Davie, Florida 33324  
 T (954) 821-6933 \* F (954) 452-7960 \* COA 27989  
 email: VJK@Knezevich.com

Copyright © 2009 VJKnezevich & Associates, LLC db/a Knezevich Associates

**Transparent Protection Systems, Inc.**  
 6661 N. 42nd Terrace  
 West Palm Beach, FL 33407  
 (888) 447-8326

**CLEAR GUARD HURRICANE PANELS**

no.	date	by	description

**V.J. Knezevich**  
 Professional Engineer  
 FL License No. 190010983

APR 14 2009

drawn by: ARV scale: AS NOTED  
 date: 04/14/2009  
 drawing no. **09-123**  
 sheet 4 of 4

PRODUCT REVISED  
 as complying with the Florida  
 Building Code  
 Acceptance No. 09-0423.04  
 Expiration Date 07/19/2014  
 By: *Heather A. Miller*  
 Miami Dade Product Control  
 Division